

Informacije | Information:

Dubrovnik Partner
T +385 20 773 331
E skycellar@dubrovnikpr.com



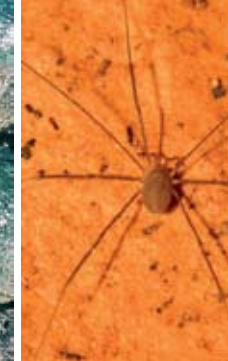
SIGURNOSNE UPUTE

Krećite se oprezno / Koristite odgovarajuću obuću za kretanje po špilji / Pazite na strme stepenice i mokro tlo / Držite se za sigurnosnu ogradu / Temperatura u špilji je 16°C / Ne ulazite u špilju ako Vaše zdravstveno stanje to ne dopušta / Maksimalan broj posjetitelja u špilji je 25 / Djeca mlađa od 7 godina ne smiju ući u špilju bez pratnje starije osobe.

SAFETY INSTRUCTIONS

Move carefully / Wear proper footwear while visiting the cave / Observe steep stairs and wet ground / Hold onto the security fence / Cave temperature stays a constant 16°C / Do not enter the cave if your medical condition doesn't allow it / Tour groups are limited to 25 people / Children under 7 years of age cannot enter the cave without supervision of an elder.

Đurovića špilja



Đurovića špilja, u istočnom dijelu sela Močići u općini Konavle, nalazi se u okviru Zračne luke Dubrovnik. Njena lokacija - ispod samog uzletišta, odnosno stajališta za avione - čini je jedinstvenom u svijetu, čemu duguje i svoje komercijalno ime: Skycellar (nebeski podrum).

Obzirom na morfološku klasifikaciju speleoloških objekata u hrvatskom kršu, Đurovića špilja ubraja se među jednostavne špilje. Sastoji se od jednog špiljskog kanala silaznog tipa, bez većih bočnih kanala, u dnu preoblikovanog intezivnim urušavanjem. Duljinom kanala od 199 m spada u kategoriju srednje dugačkih špilja. Oblikovana u naslagama gornjokrednog vapnenca i djelomično sedimentnih stijena poput breče, obiluje sigama različitih tipova: stalaktitima, stalagmitima, sigastim prevlakama, saljevima. Proširenje kanala na samom dnu špilje, ili Dvorana Dubrovačke Republike, obiluje najljepše profiliranim sigama uskih i plitkih brazda, te malim lokvicama vode u nepropusnom sedimentu. Prirodni ulaz u špilju više ne postoji. Zatvoren je tijekom gradnje zračne luke (1960. -1963.), a danas se u špilju ulazi betonskim pristupnim kanalom dužine 37 metara.

Početkom 20. stoljeća u špilji je istraživao austrijski biospeleolog Viktor Apfelbeck tada kustos Zemaljskog muzeja u Sarajevu, ali prvo istraživanje o kojem postoji zapis, proveo je češki biospeleolog Karel Absolon 1913. godine. Đurovića špilju od tad je posjetio niz biospeleologa poput Miha Kusijanovića - jednog od prvih dubrovačkih speleologa, Don Vice Medinija - filologa i historičara, te akademika Mirka Maleza, koji špilju posjećuje 1958. godine, u okviru paleontološko - speleoloških istraživanja dubrovačke okolice.

Prvi posjet i istraživanje, nakon izgradnje umjetnog tunela, proveli su speleolozi Hrvatskog planinarskog društva Mosor iz Splita, 2001. godine. Izradili su prošireni speleološki zapisnik s topografskim nacrtom, obavili mikroklimatske izmjere temperature i vlage zraka, te biospeleološko prikupljanje materijala. Utvrđena je fauna puževa Gastropoda, rakova Aegonethes cervinus, te stanište higrofilne Budeundielle cataractae. U razdoblju od 2003. do kraja 2005. godine u sedam navrata ekološka istraživanja uz sakupljanje faune špilje, provodi Hrvatsko biospeleološko društvo. Društvo za istraživanja i snimanja krških fenomena "Dinaridi" sa istraživanjima je počelo u srpnju 2005. godine. Obavljaju speleološka, geomorfološka, paleontološka, biospeleološka istraživanja i geodetska snimanja.

Arheološka istraživanja u špilji vodila je institucija Muzeji i galerije Konavala. Površinskim pregledom terena pronađen je veći broj keramičkih ulomaka i kostiju u niši u sjeverozapadnom dijelu špilje, te se pristupilo probnom sondiranju ne bi li se vremenski i kulturološki definirao preostatak kulturnih slojeva. Preliminarna analiza pronađenih ulomaka okvirno datira ovaj lokalitet kao prapovijesni arheološki lokalitet, brončanog i željeznog doba (1. tisućljeće prije Krista). Probna arheološka istraživanja Đurovića špilje otkrila su zanimljiv lokalitet koji je služio kao povremeno stanište i zaklonište tijekom niza stoljeća u čijoj se neposrednoj blizini nalazi i niz od nekoliko prapovijesnih gomila i gradina.

Đurović Cave



Đurovića špilja Đurovića Cave

Zračna luka Dubrovnik | Dubrovnik Airport

Đurović Cave, located in the eastern part of the village of Močići in the municipality of Konavle, is a part of the Dubrovnik Airport. Its location – right below the runway, i.e. the apron – makes it unique in the world. It also owes its commercial name, Skycellar, to this particular location.

According to speleomorphological classification of the Croatian Karst, the Đurović Cave belongs to more simple caves. It consists of one downwards passage, which is reshaped in its back part through intensive implosion and there are no larger side channels. The length of the passage is 199 metres, which classifies the cave as a middle-length one. Đurović Cave is made of deposits of upper Cretaceous limestone and partly of sedimentary rocks such as breccia and abounds in dripstones of various types such as stalactites, stalagmites and flowstones. The Hall of the Republic of Dubrovnik adorns the very bottom of the cave and represents a widening of the channel. There you can find the most appealing dripstones, narrow and shallow hollows and small pools in impenetrable sediment. There is no natural entrance to the cave as it was closed during the construction of the airport (1960 -1963). Today's access to the cave is provided by a 37 metres long concrete passage.

The Austrian biospeleologist Viktor Apfelbeck, the then curator of the National Museum in Sarajevo, explored the cave at the beginning of the 20th century. However, the first known and documented exploration of Đurović Cave was carried out by the Czech biospeleologist Karel Absolon back in 1913. There have been many biospeleologists visiting the Đurović Cave since, such as Miho Kusijanović, one of the first Dubrovnik speleologists, the philologist and historian Don Vice Medini and the academician Mirko Malez, who visited the cave in 1958

in the course of paleontological and speleological explorations of Dubrovnik surroundings. The first visit and exploration of the cave after its closure by an artificial tunnel took place in 2001 by the members of the Speleological Section of Mountaineering Society "Mosor" from Split. They made an extended report with a topographic plan for the Dubrovnik Airport. In addition, they measured microclimatic changes in temperature and air humidity and collected materials for their biospeleological examinations. There is a rich fauna living there; snails Gastropods, also crustaceans *Aegonethes cervinus* and the habitat of *Budeundielle cataractae*, hygrophilia. In the period 2003 – 2005 seven ecological studies were undertaken by the Croatian Biospeleological Society (HBSD), during which specimens of the cave fauna were collected. Dinaridi – Society for the Research, Surveying and Filming of Karst Phenomena (DDISFK) started its research in July 2005. Since then, thorough speleological, geomorphological, paleontological, biological research and surveys have been carried out.

Archaeological research of the cave was conducted by Museums and Galleries of Konavle. The examination of surface has yielded a number of ceramic fragments and bones in niche located in the northwest part of the cave. Probe sounding has been carried out in order to determine the remnants of the remaining cultural layers temporally and culturally. A preliminary analysis of these fragments gives only the general age of this locality and dates it back to pre-historical period, the Bronze and Iron Age (1st millennium BC).

Archaeological research of the Đurović Cave has revealed an interesting locality that has served as a temporary habitat and shelter for many centuries, and in whose vicinity several pre-historical burial mounds and ruins were found.

